



Rethink Home.

Introducing Citadel: *The Freedom To Live Securely. Anywhere.*

CITADEL Project



Our World is Changing. Our Homes Are Not.

We are facing an unprecedented increase in natural disasters. Floods, fires, hurricanes, and earthquakes are becoming more frequent and destructive. Yet we still build homes designed for a world that no longer exists, leaving millions of families vulnerable.

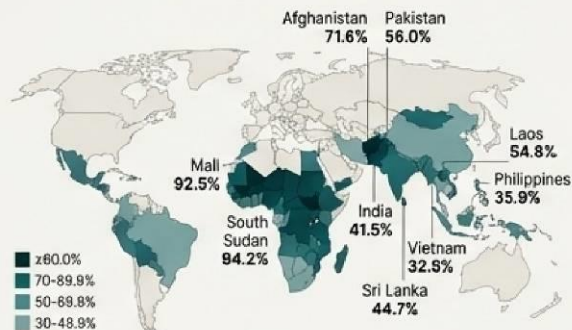
When Disaster Strikes, Shelter Is The First Necessity.

Every year, millions are displaced by natural disasters like floods, tornadoes, and wildfires. Traditional housing offers little protection, leaving families vulnerable and communities shattered. We are facing a crisis of resilience.



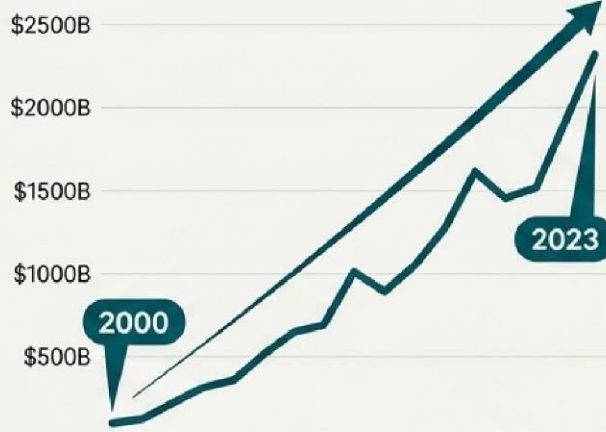
Our Homes Can No Longer Keep Us Safe.

Over 30% of urban population in slums



Source: United Nations Human Settlements Programme

Global Disaster Damage Losses (2000-2023)



Housing: A Top National Issue



\$2.29 Trillion

The economic toll of global disasters since 2000 is accelerating.

1 Billion+ People

Live in housing that cannot provide basic safety and security.

58%

Of people in developed nations like Canada already see housing as a top national issue.

The Dream of a Home Has Become a Trap.



- **Financial Burden:** Trapped by 30-year mortgages and crippling utility bills.



- **Climate Threats:** Increasingly vulnerable to fires, floods, and storms that can wipe out everything.
- **Total Inflexibility:** Rooted in one place, unable to adapt to life's changes.



When the Storm Passes, the Real Challenge Begins.

For millions, displacement means living in flimsy, insecure shelters with poor insulation and little comfort. For others, it means facing a mountain of debt to rebuild a home that remains just as vulnerable. This cycle of destruction and financial burden must end.

"Millions of people are left without reliable housing when they need it most."

A Shelter Should Never Be a Trap.



In memory of the 27 lives lost at Camp Mystic, July 4, 2025.
Their tragedy is a mandate for change.

We Believe in a Future Where Your Home Adapts to Your Life.

Imagine a home that grows with you, moves with you, and protects you from the unpredictable. A home that frees you from utility bills and crippling debt, empowering you to invest in what truly matters: your family, your education, your future.

This is the promise of Citadel.

“Affordable, energy-efficient housing is the cornerstone of social security and family values.”





Rebuilding Not Just Houses, But Hopeful Communities.

Our scalable production is optimized for automated lines, enabling high-quality mass construction after large-scale natural disasters. From a single home to an entire village, we can rebuild safer, together.

We Believe a Home should Be A Fortress.

ARMOR FOR A CHANGING WORLD.

The only solution on the market designed to protect against all major natural disasters.



HURRICANE & TYPHOON

An aerodynamic shape and robust construction withstand extreme winds and flying debris.



FLOOD

The structure is water-resistant, preventing rot and mold. An optional floating pontoon base ensures survival in rising waters.



EARTHQUAKE

The foundation includes adjustable, earthquake-proof supports for anti-vibration stability.



FIRE

All interior and exterior materials are non-combustible for maximum fire resistance.



EXTREME TEMPERATURES

A high-performance insulation system maintains interior comfort in climates ranging from -76°F to $+122^{\circ}\text{F}$ (-60°C to $+50^{\circ}\text{C}$)



SNOW LOAD

The structure is engineered to handle snow loads for 100% of the world's territory.



Engineered for Survival. Built for Life.

Core Structure

Very sturdy Aluminum or steel frames provide an exceptionally strong foundation.

Foundation Versatility

Adapts to any terrain with options for concrete slab pier. Pile screw, or even floating pontoon foundations.

Advanced Protection Options

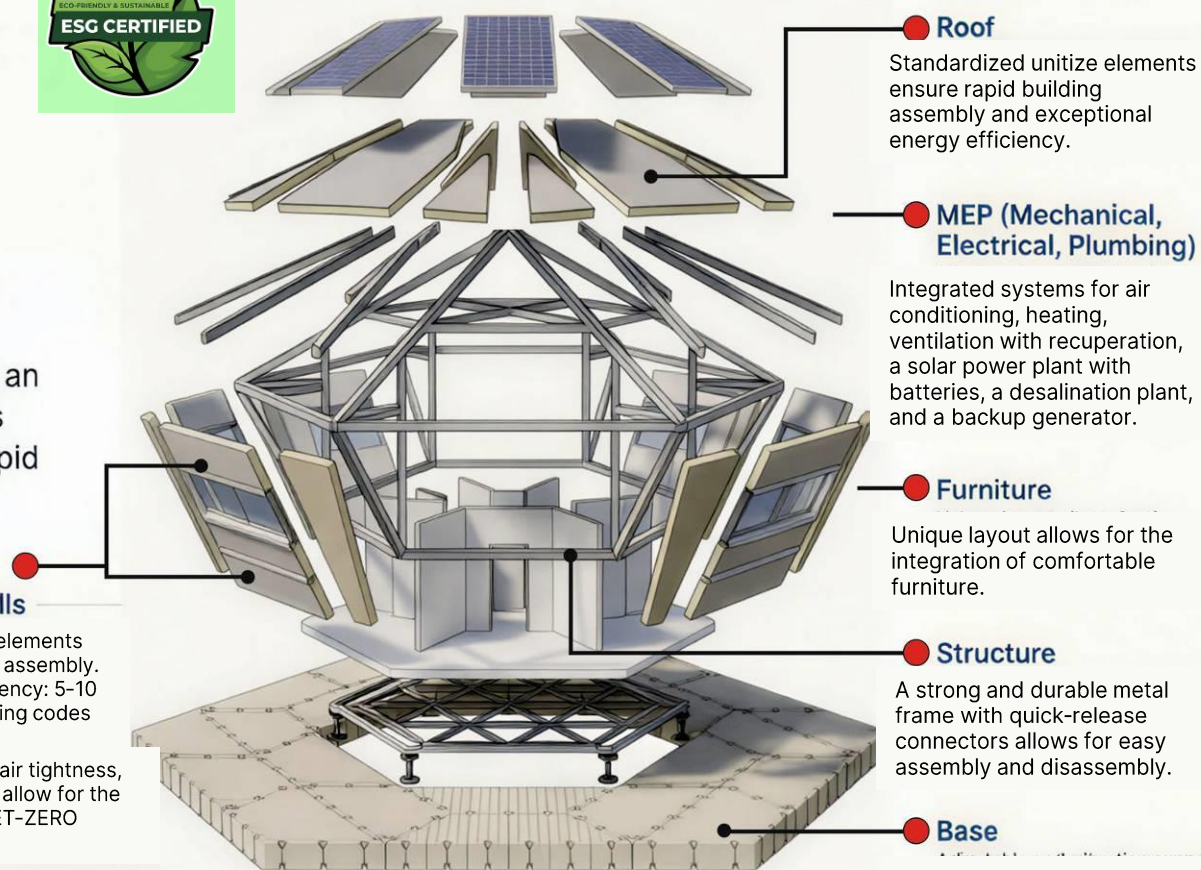
- Hurricane-resistant ground anchorage and protective barriers.
- Armor plating against bullets of different classes.
- Additional fire barriers with resistance up to 2552 Fahrenheit (1400 Celsius)

The Ultimate Proof

We are on a clear path to full certification by the **IBHS Research Center** for hail, wind, rain, and wildfire resistance.

The Anatomy of a Universal Platform

The Citadel platform is a unified set of solutions—design, production, and construction—for creating buildings of an size or purpose. Our modular system is engineered for maximum efficiency, rapid assembly, and total autonomy.



Roof

Standardized unitize elements ensure rapid building assembly and exceptional energy efficiency.

MEP (Mechanical, Electrical, Plumbing)

Integrated systems for air conditioning, heating, ventilation with recuperation, a solar power plant with batteries, a desalination plant, and a backup generator.

Furniture

Unique layout allows for the integration of comfortable furniture.

Structure

A strong and durable metal frame with quick-release connectors allows for easy assembly and disassembly.

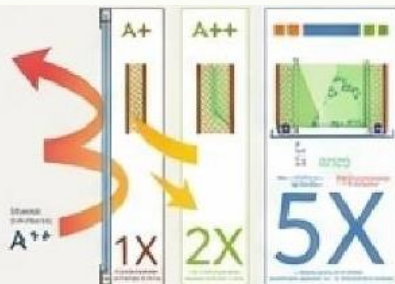
Base

Adjustable and vibration supports and a modular floating pontoon for flood protection. Strong and durable aluminum frame.

Windows and Walls

Standardized unitized elements allow for rapid building assembly. Maximum energy efficiency: 5-10 times higher than building codes in many countries.

Patented glazing, high air tightness, and superior insulation allow for the construction of true NET-ZERO buildings.

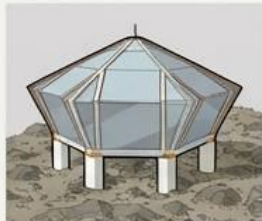


A 50+ Year Lifespan of Uncompromising Performance.

A FOUNDATION FOR EVERY FUTURE. DEPLOY ON ANY TERRAIN.

From hardscape to wetlands, the Citadel adapts. A range of foundation options ensures stable, secure installation in any environment with minimal site disruption.

Adaptable foundations: For Challenging Terrain



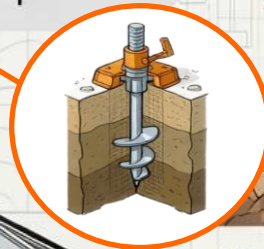
Pier foundation:
Minimizes ground disturbance, making it ideal for sloped and sensitive.



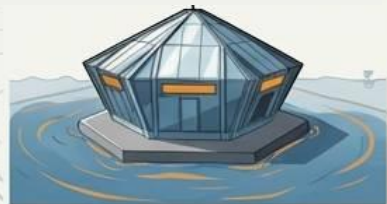
Screw pier foundation:
Enables rapid, non-invasive installation with minimal excavation

Build on Steep Slopes

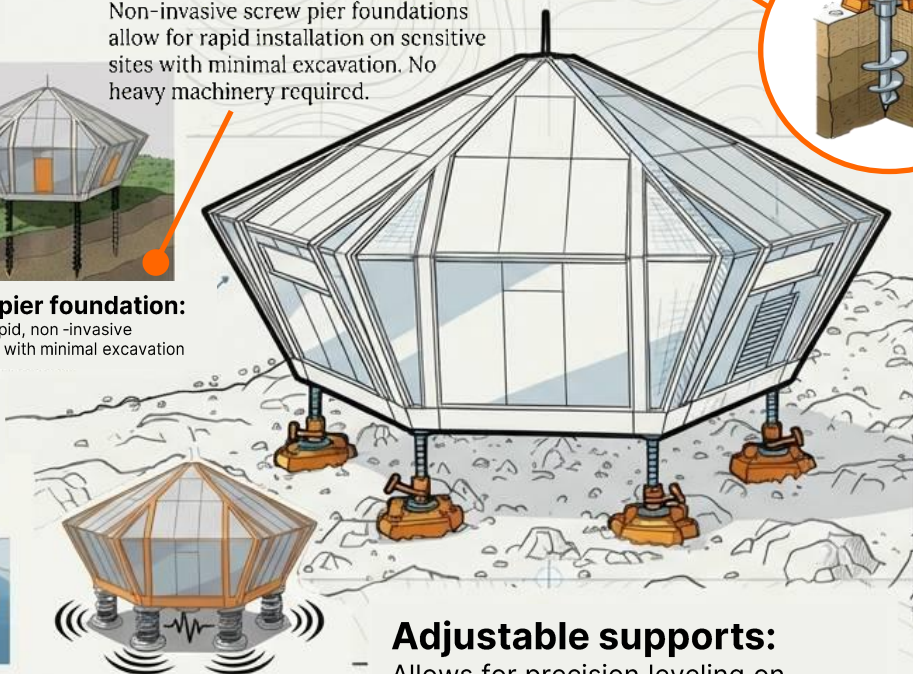
Non-invasive screw pier foundations allow for rapid installation on sensitive sites with minimal excavation. No heavy machinery required.



Resilient foundations For Extreme Environments



Floating pontoon.
Rise above the flood. The ultimate flood-proof solution, allowing your Citadel to rise safely and automatically with changing water levels.



Anti-vibration mounts.
Rise above the tremors, engineered for seismic zones, these mounts protect the structure and its inhabitants from earthquakes

Adjustable supports:

Allows for precision leveling on uneven ground and temporary installation without damaging surfaces.

WHEELS FOR MOBILITY



- Provides true mobility for easy relocation without disassembly.
- Allows temporary installation on road surfaces without damage.
- Mobile field operations, scientific research outposts, rapid-response emergency shelters



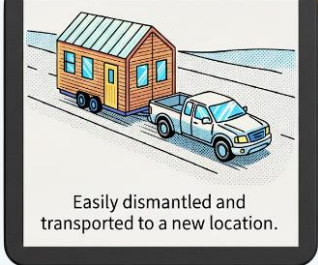
Hexagon Slab Foundation.
For permanent, traditional installations requiring maximum stability.



Hexagon Strrib Foundation.
For continuous, high-strength support perimeter, suitable for support the diameter, designed for heavy waves, and superior load distribution.

Mission profile.

Deployment on existing hardscapes (asphalt, concrete pads, extremely rocky ground requiring point-by-point leveling, and demanding perfect habitat orientation.

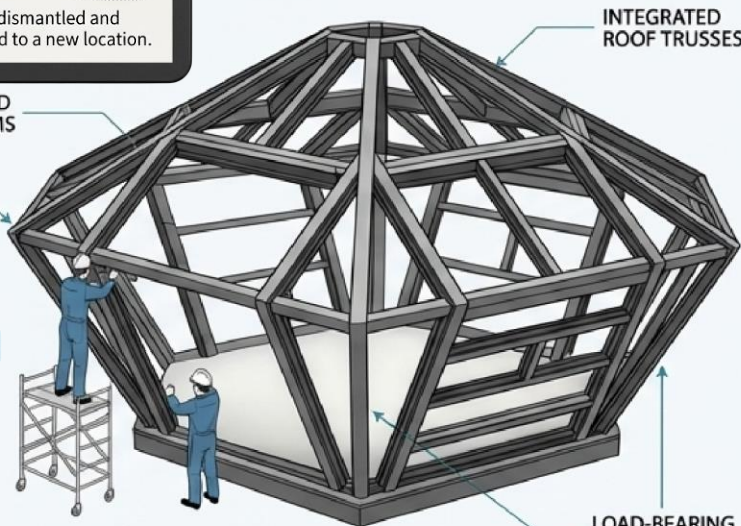


Engineered to Endure Anything.

Easily dismantled and transported to a new location.

REINFORCED STEEL BEAMS

RIGID CORNER JOINTS



INTEGRATED ROOF TRUSSES

LOAD-BEARING COLUMNS

Unbreakable Skeleton:

A very sturdy Aluminum or Steel frame forms a rigid, protective core, engineered to endure extreme stress.

The frame is strong enough to hang furniture (even beds)

Our structures use Thermosetting polyisocyanurate (PIR) insulation, a material with unique protective properties. When exposed to fire, it forms a porous carbon matrix, charring the outer surface to prevent internal combustion and fire spread.



Fireproof



Lightweight & Durable (>50 year service life)



Impervious (Does not absorb moisture)



Pest-Resistant (Rodents and insects don't like it)

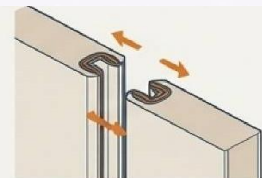
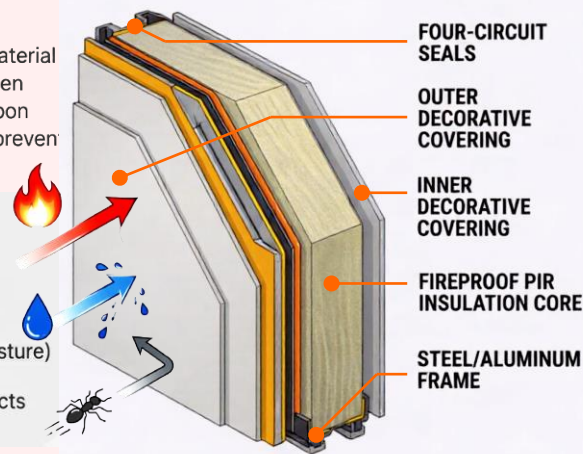


Compact packaging for low-cost delivery anywhere.

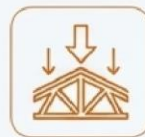
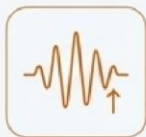


High-Performance Panel System

Four sealing circuits per panel ensure a fast, high-quality, durable installation in any climate, with a wide selection of decorative coverings.



Proven Protection:



From a Box to a Home. No Crane Required.

Delivery



Assembly



Structure



Delivery



Assembly

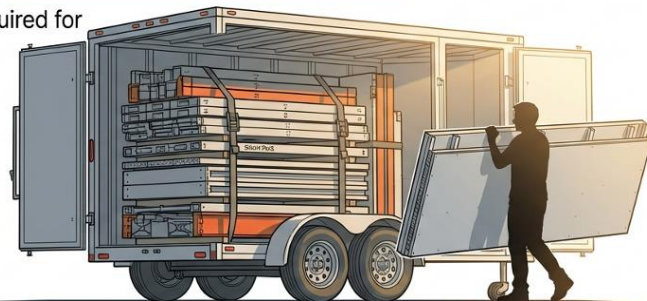


Structure

Citadel ships globally in a single container. The lightweight, precision-made parts are designed for simple, DIY assembly by 2-4 people without prior experience or heavy lifting equipment.

ENGINEERED FOR HUMAN HANDS

No heavy machinery is required for offloading. The kit arrives in a unified package, but every component is designed for manual handling.



Tow Vehicle: Standard Pickup (e.g., Ford F-150)



Transport: Standard 16ft Enclosed Trailer



Total Kit Weight:
< 8,800 lbs (4 tons)

Forget cranes and wide-load permits. The entire Citadel-kit packs into a **STANDARD TRAILER**. Whether you are building in a suburban backyard or an off-grid mountain peak, if your truck can get there, your house can too.

MAX WEIGHT:
< 66 lbs (30 kg)



MAX LENGTH:
~10 ft (3000 mm)



METHOD:
Manual Transfer



Logistics solved with standard equipment.
No Heavy Haulers Required
TOW IT YOURSELF

Two People. One Day. Zero Heavy Machinery.

ESSENTIALS:

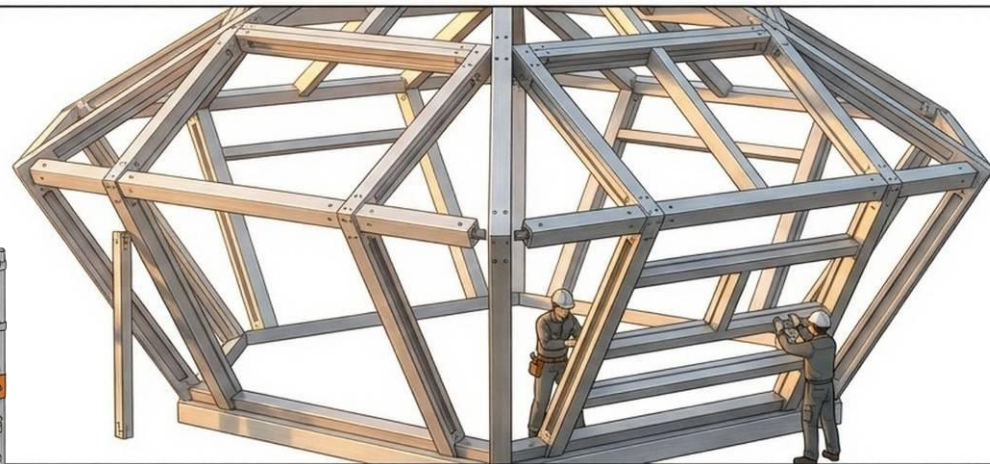
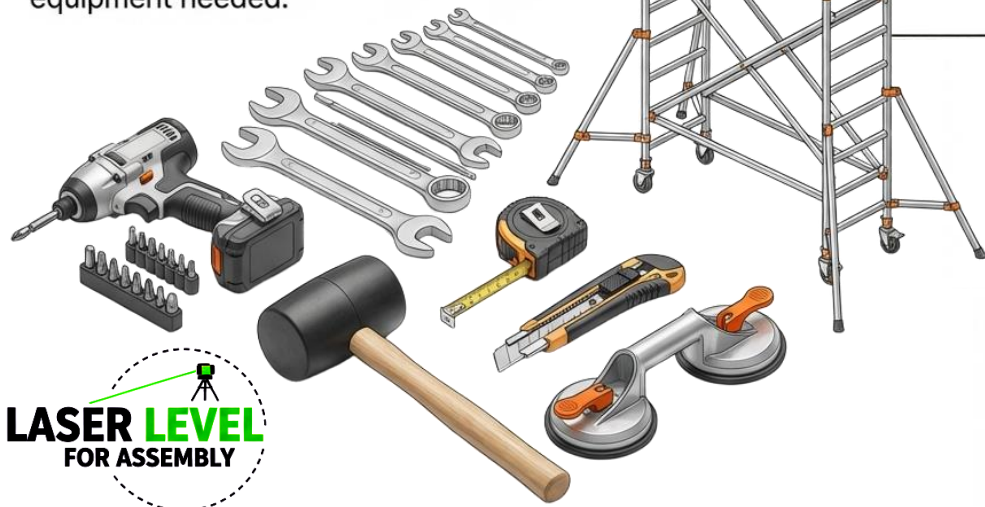
- Scaffold / 12ft Ladder
- Rotary Hammer
- Impact Driver + Bits
- Rubber Mallet

PRECISION:

- Laser Level
- Tape Measure
- Glass Suction Cups (x2)

Your DIY Arsenal

No specialized heavy construction equipment needed.



PHASE 1: THE WARM SHELL

Time: 1 Day

Team: 2 People

- Assembly of floor base and load-bearing frame.
- Installation of wall and roof panels with integrated insulation.
- Result: Weather-tight structure ready for finishing.

PHASE 2: INTERIOR & SYSTEMS

Time: Several Days

Team: 1 Person

- Installation of partitions, doors, electrical, and HVAC.
- Timing depends on installer experience.

Tier 1: Basic

- Metal power frame
- Rapid-assembly wall/roof panels
- Windows & PIR insulation
- Entrance door

Tier 2: Standard

- Includes Basic +
- Partition walls/doors
- Full Electrical (wiring, lights, automation)
- HVAC (AC + Heat + Recuperation)
- Equipped Bathroom
- Modular Kitchen

Tier 3: Off-Grid

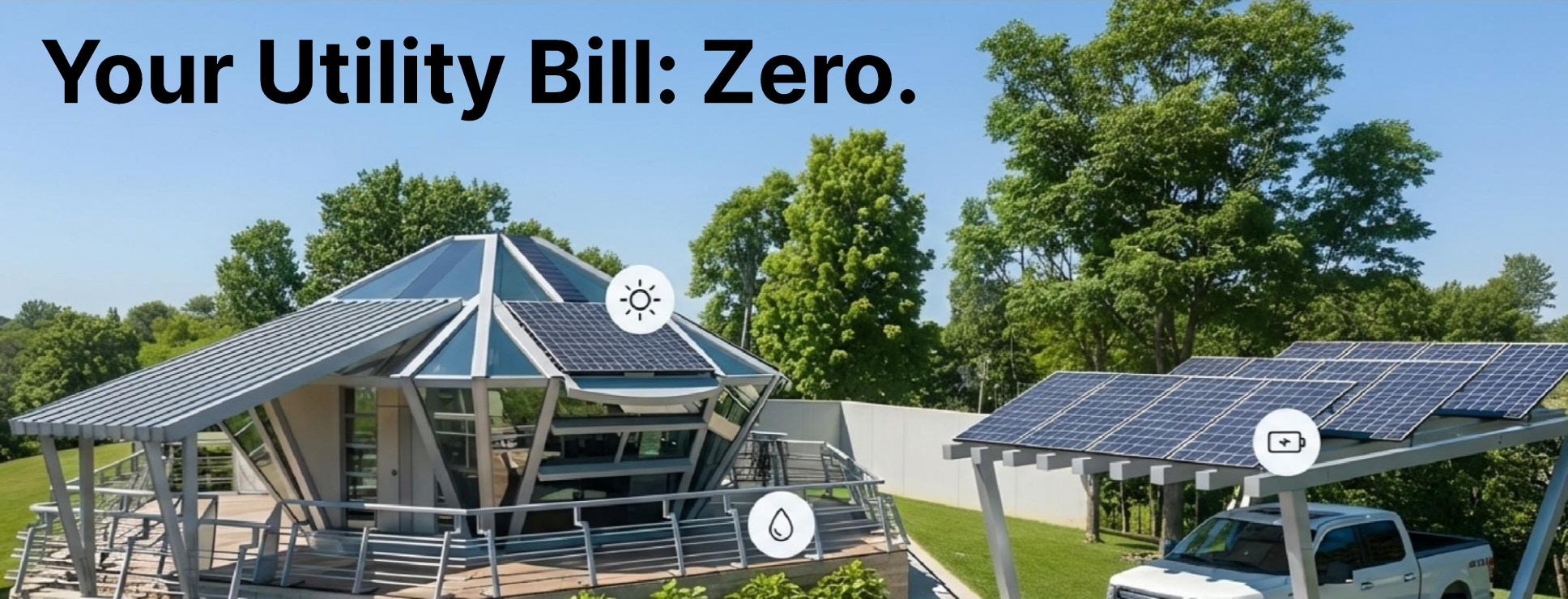
- Includes Standard +
- Floor truss system with insulation
- Solar Kit (Panels + Hybrid Inverter)
- Water/Battery ready

Configure Your Citadel



Optional Upgrades: Smart home integration, motorized blackout curtains, security shutters, terrace kits.

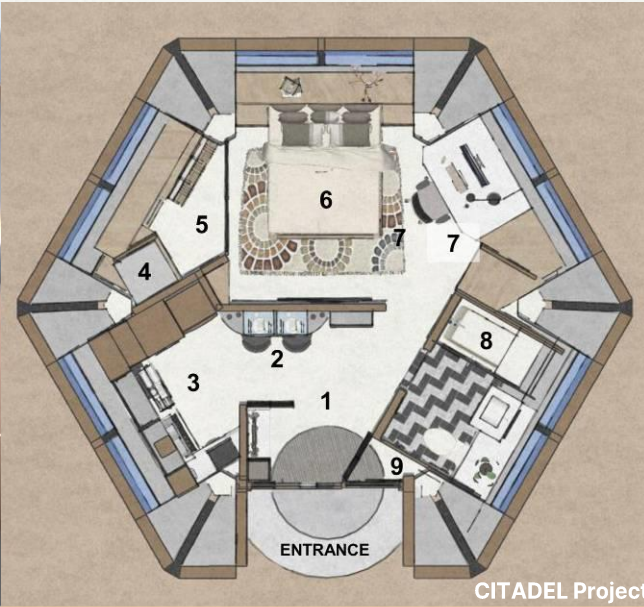
Your Utility Bill: Zero.



Your Own Private Power Grid.

The exceptional energy efficiency of windows and walls allows for energy-independent building in any climate, exceeding codes in many countries by up to 10 times. Integrated solar systems allow a Citadel to achieve Net-Zero energy. Live comfortably off-grid and say good bye to utility bills forever.

Maximum Functionality in a Minimal Footprint.



CITADEL Project

More Usable Space

High ceilings and angled walls increase usable space and create a feeling of openness.

Flexible Interiors

The ultra-strong frame allows for hanging furniture (beds, tables, shelves) to maximize floor space.

Rapid Installation

Prefabricated pods (like the bathroom) arrive ready to install, dramatically speeding up construction.

Citadel 25 Studio The Solo

(25 sq m / ~ 270 sq ft)

1. Hall

2. Dining area

3. Kitchen

4. Laundry

5. Wardrobe

6. Bedroom

7. Den

8. Bathroom

9. Engineering
equipment room



PREFABRICATED BATHROOM POD



A Revolution in Form. A Revelation in Function.

The genius of the Citadel extends from its external shell to its meticulously planned interior. We will now explore how 25 square meters (270 sq. feet) are transformed into a complete, comfortable, and contemporary home.

Citadel 25 Studio The Solo

(25 sq m / ~ 270 sq ft)



Citadel 25 Studio

The Solo

(25 sq m / ~ 270 sq ft)

Start Smart. Expand Anytime. Live Debt-Free.

Stage 1



The Solo (25 m² / ~270 ft²)



Stage 2



The Couple (60 m² / ~650 ft²)



Stage 3



The Family (120 m² / ~1300 ft²)



Scalable

Start with a 25 sq. meter home and expand up to 120 sq. meters or more over time.



Transportable

Dismantle and move, or attach wheels to tow it to a new site. Your investment is preserved.



Begin with the space you need and expand as your life grows. Our modular platform allows you to add rooms and features without starting over, building equity instead of debt.



The 160 m² Family Expanse.

A generous family home designed for comfort and connection. This layout features a master suite with wardrobe and en-suite bath, two additional bedrooms, a large open-plan living and dining area, and dedicated functional zones like a den and laundry.



More Than a Home: A Platform for Infrastructure.

The Citadel platform is a universal solution for rapid, durable, and resilient infrastructure. The same technology that protects a family can build a thriving community or support a critical mission.



Residential

Single-family homes, multi-unit communities.



Commercial

Glamping sites, hotels, shops, warehouses.



Social

Hospitals, schools, emergency shelters.



Security

Police stations, control points, barracks, safe storage depots.



Your Home. Your Office. Your Escape.



GLAMPING



FLOATING HOME

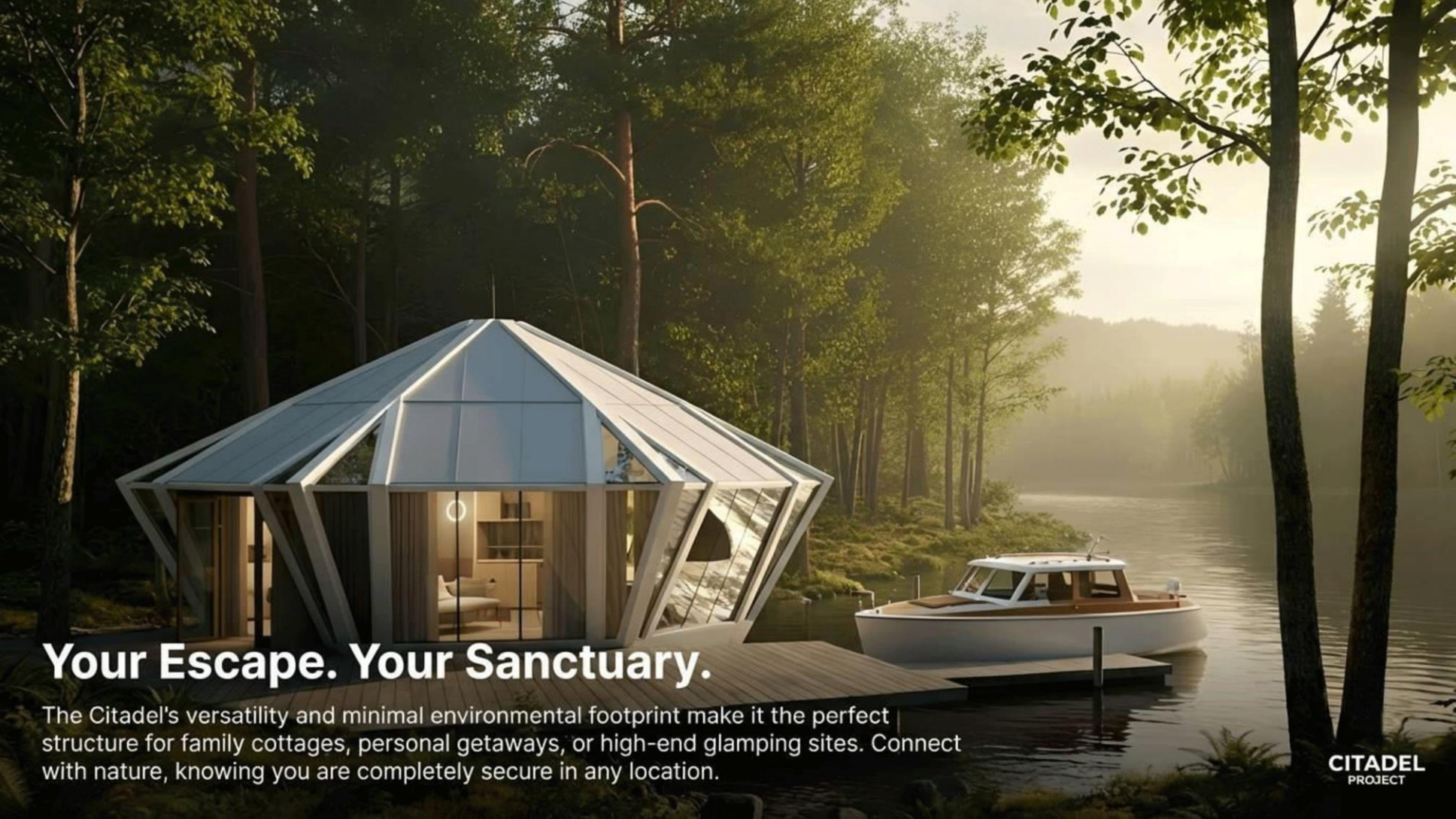


COMMERCIAL



EMERGENCY RELIEF

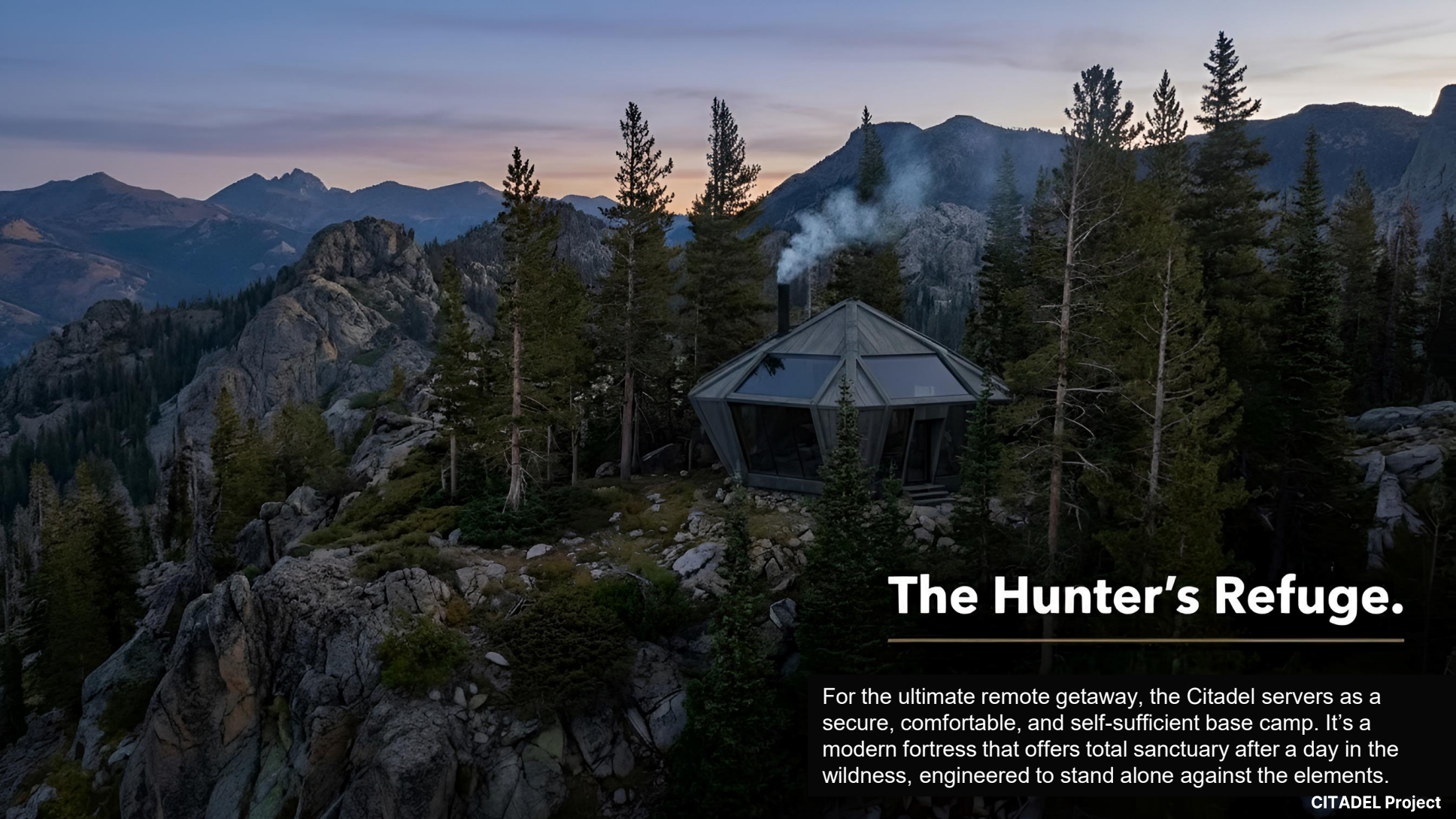
The universal platform is adaptable for any need: stylish residential homes, off-grid youth glamping, commercial spaces (shops, warehouses, service stations), or even rapid-deployment disaster relief shelters.



Your Escape. Your Sanctuary.

The Citadel's versatility and minimal environmental footprint make it the perfect structure for family cottages, personal getaways, or high-end glamping sites. Connect with nature, knowing you are completely secure in any location.

CITADEL
PROJECT



The Hunter's Refuge.

For the ultimate remote getaway, the Citadel serves as a secure, comfortable, and self-sufficient base camp. It's a modern fortress that offers total sanctuary after a day in the wildness, engineered to stand alone against the elements.

CITADEL Project

Your Private Sanctuary. Anywhere.

The perfect solution for those who seek solitude and adventure without compromising on comfort or security.

The ultimate private residence in the mountains

Secluded, durable hunting lodges for elite adventures

Luxury off-grid living with uncompromising style





The Private Retreat

The ultimate escape. A standalone fishing lodge, an artist's studio, or a private cottage where solitude and nature converge. The perfect base for personal reflection and adventure.



The Social Hub

The center of community life on the water. Configure open-plan pavilions for a world-class restaurant, an exclusive yacht club, or a breathtaking venue for weddings and celebrations.

CITADEL Project



Forget cranes and heavy construction crews. The Citadel delivered in compact packaging for deliver anywhere. Its components are engineered to be lightweight and manageable, allowing to assembly to the most remote and inaccessible locations.

The Logistic Of The Impossible, Simplified.

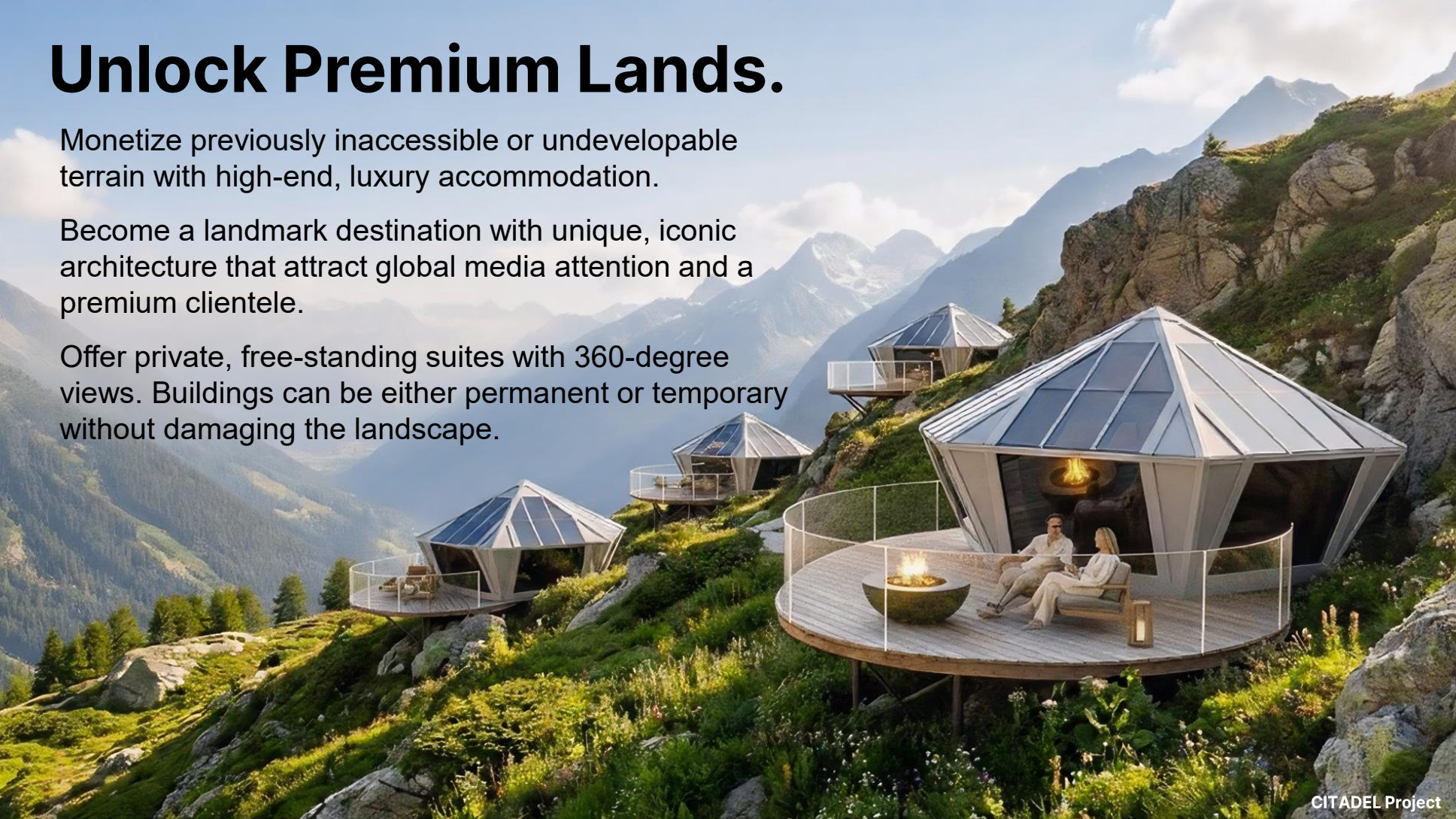


Unlock Premium Lands.

Monetize previously inaccessible or undevelopable terrain with high-end, luxury accommodation.

Become a landmark destination with unique, iconic architecture that attract global media attention and a premium clientele.

Offer private, free-standing suites with 360-degree views. Buildings can be either permanent or temporary without damaging the landscape.



The Future Of The Mountain Resort.

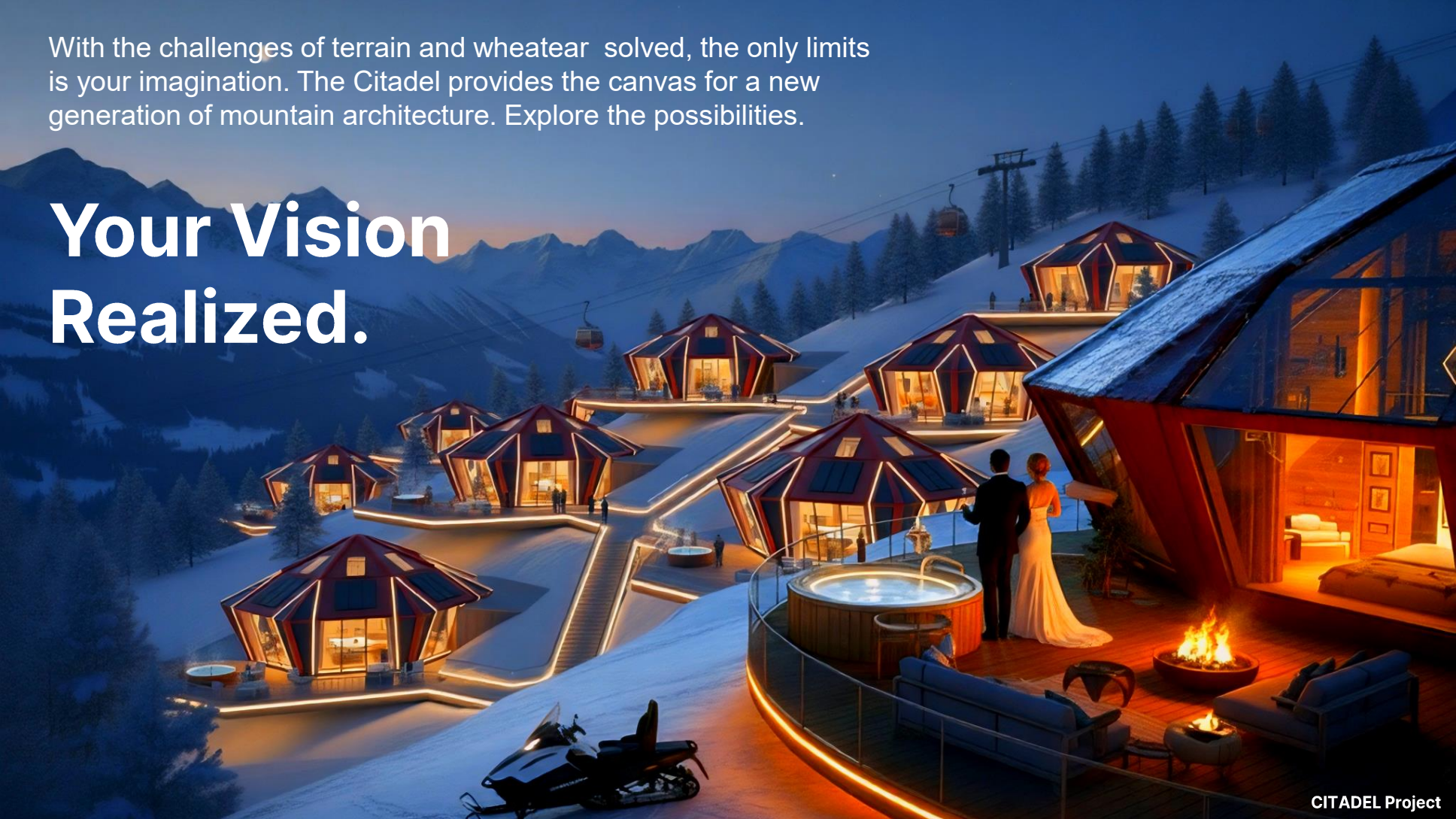
Create an entire village of Citadel domes. The standardized, modular system allows for seamless expansion, from an initial boutique offering to a full-scale resort.

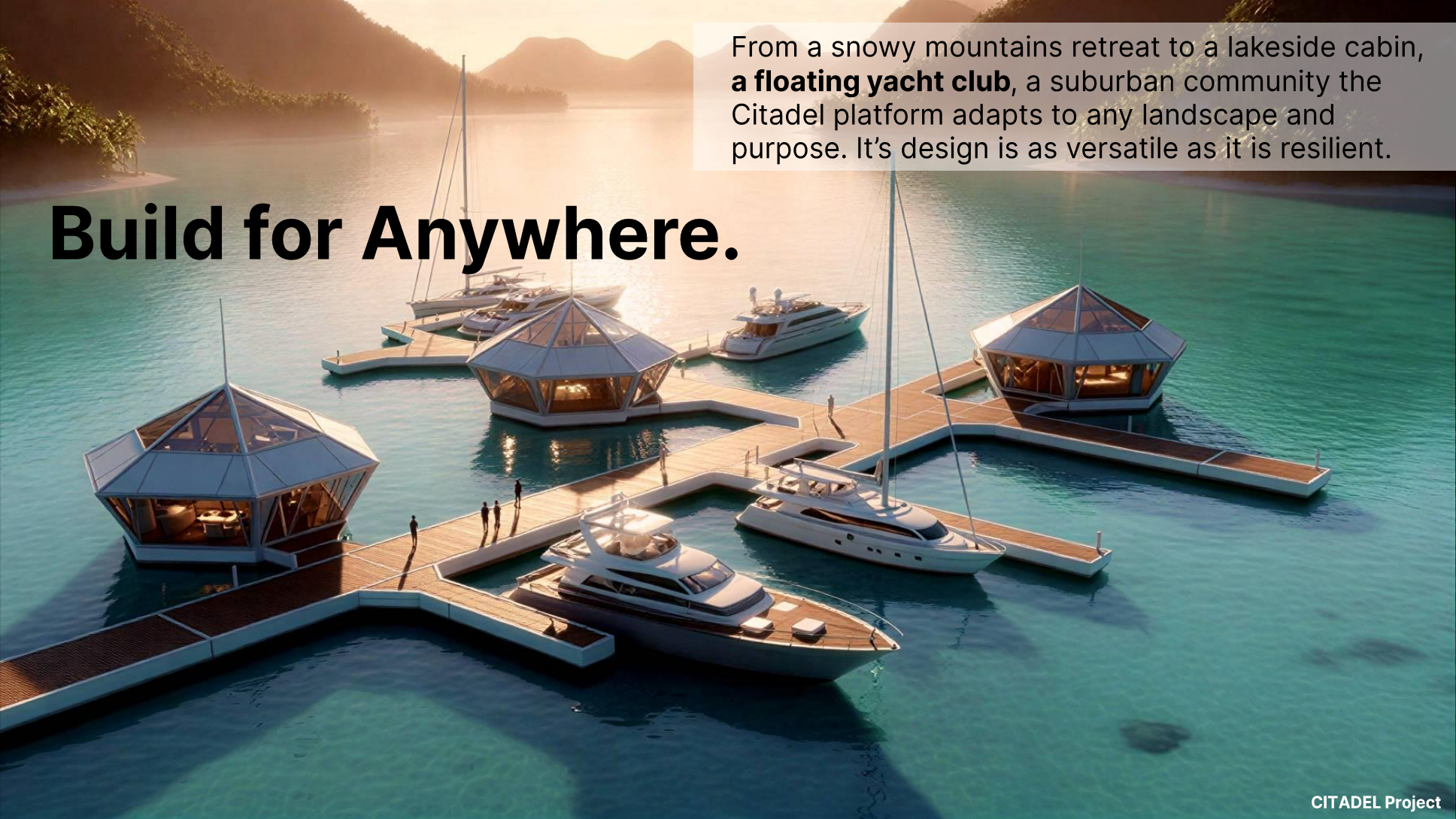
- **Unique guest experience:** Offer unparalleled views and futuristic comfort
- **Scalable Development:** Start with one module (25 sq. meter) and expand to 40, 60, 120 or 160 meters as your business grows.
- **Operational Efficiency:** Superior insulation and natural air circulation reduce energy costs.



With the challenges of terrain and wheatear solved, the only limits is your imagination. The Citadel provides the canvas for a new generation of mountain architecture. Explore the possibilities.

Your Vision Realized.



An aerial view of a floating yacht club. The structure consists of several interconnected wooden docks with modern, glass-enclosed pavilions that have peaked roofs. Inside the pavilions, warm lights are visible. Several white yachts are moored at the docks. The water is a vibrant turquoise, and the background shows a hazy sunset over a body of water with distant mountains.

From a snowy mountains retreat to a lakeside cabin, **a floating yacht club**, a suburban community the Citadel platform adapts to any landscape and purpose. Its design is as versatile as it is resilient.

Build for Anywhere.

The Exclusive club.

Build the next generation of private hospitality. Create a modern high-end Net-Zero clamping resort.



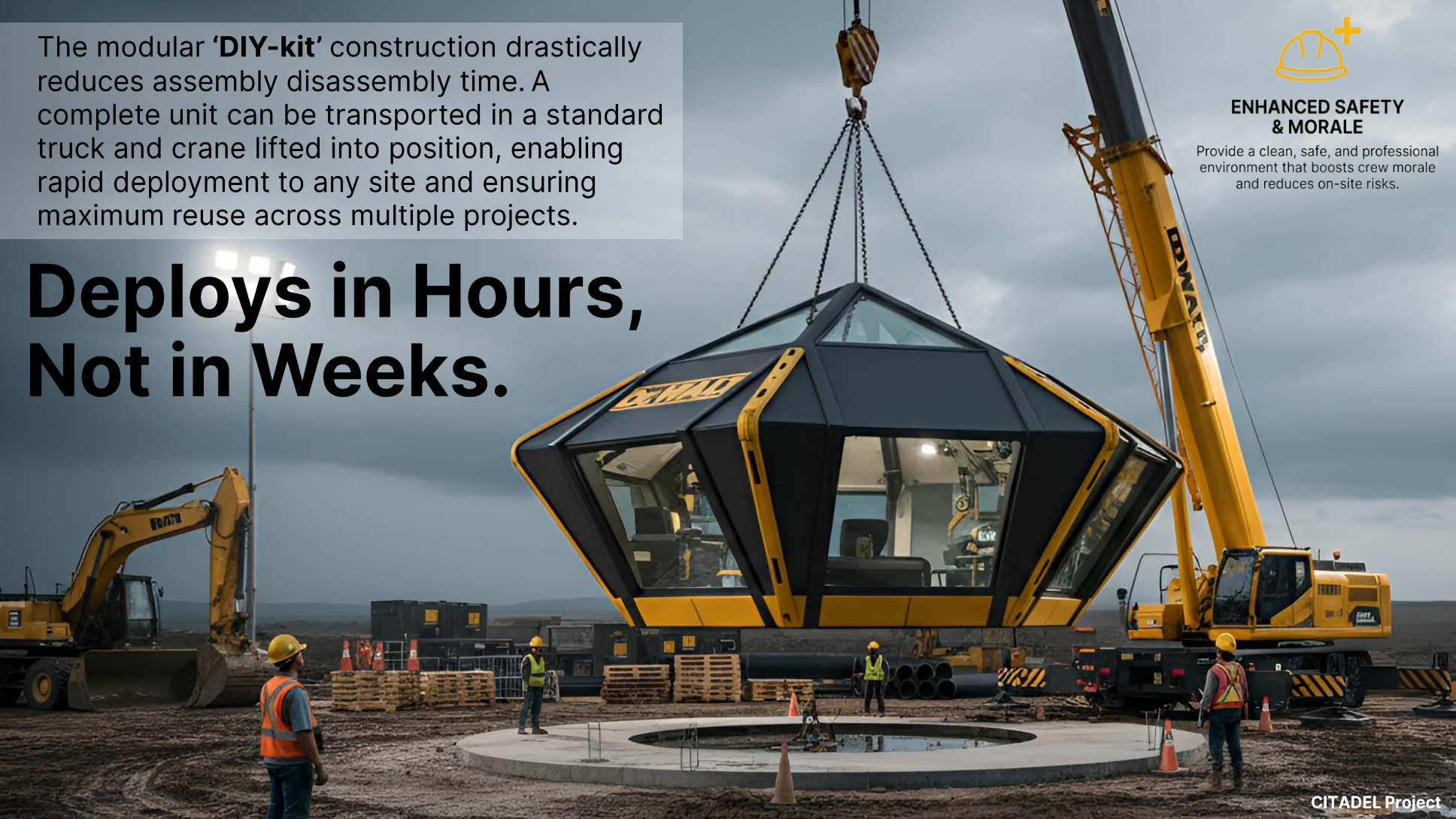
The modular '**DIY-kit**' construction drastically reduces assembly disassembly time. A complete unit can be transported in a standard truck and crane lifted into position, enabling rapid deployment to any site and ensuring maximum reuse across multiple projects.

Deploys in Hours, Not in Weeks.



ENHANCED SAFETY & MORALE

Provide a clean, safe, and professional environment that boosts crew morale and reduces on-site risks.



The One Structure for Every Mission.



Project Command Center

A centralized hub for plans, communication, and decision-making.



Secure Tech & Tool Hub

A climate-controlled, high-security vault for valuable equipment, drones, and computers.



On-Site Crew Quarters

A comfortable, insulated, and safe environment for housing personnel.



Professional Client Hub

A futuristic, impressive space for hosting client meetings and stakeholder presentations on-site.

Open-Span Layout

The absence of internal load-bearing columns allows for complete freedom in floor plan design and reconfiguration.



CITADEL Project

Infinite Reusability



A single dome can serve dozens of projects over its 50+ year lifespan, eliminating the recurring cost of renting or buying disposable trailers.

Modular Expansion



Your investment grows with your needs. Start with a 25m² module and scale up to 40, 60, 120, or even 160m² with expansion kits.

Lower Lifetime Cost



Superior energy efficiency, zero maintenance, and extreme durability result in a significantly lower total cost of ownership compared to any alternative.

When Minutes Matter, Response Infrastructure Must be Inviolable.

When disaster strikes, the first necessity is a fortress of care.



When the water rises, the Citadel becomes an island of safety and operation. It's aerodynamic form withstands extreme wind while a floating pontoon foundation ensures the facility remains above the flood, fully operational for rescue and medical care.

Hurricane and Flood Response



Mass Causality Incident Response.



Advanced Triage & Assessment Center

Secure, All-Weather Patient Corridor

Pressurized Field Surgical Suite

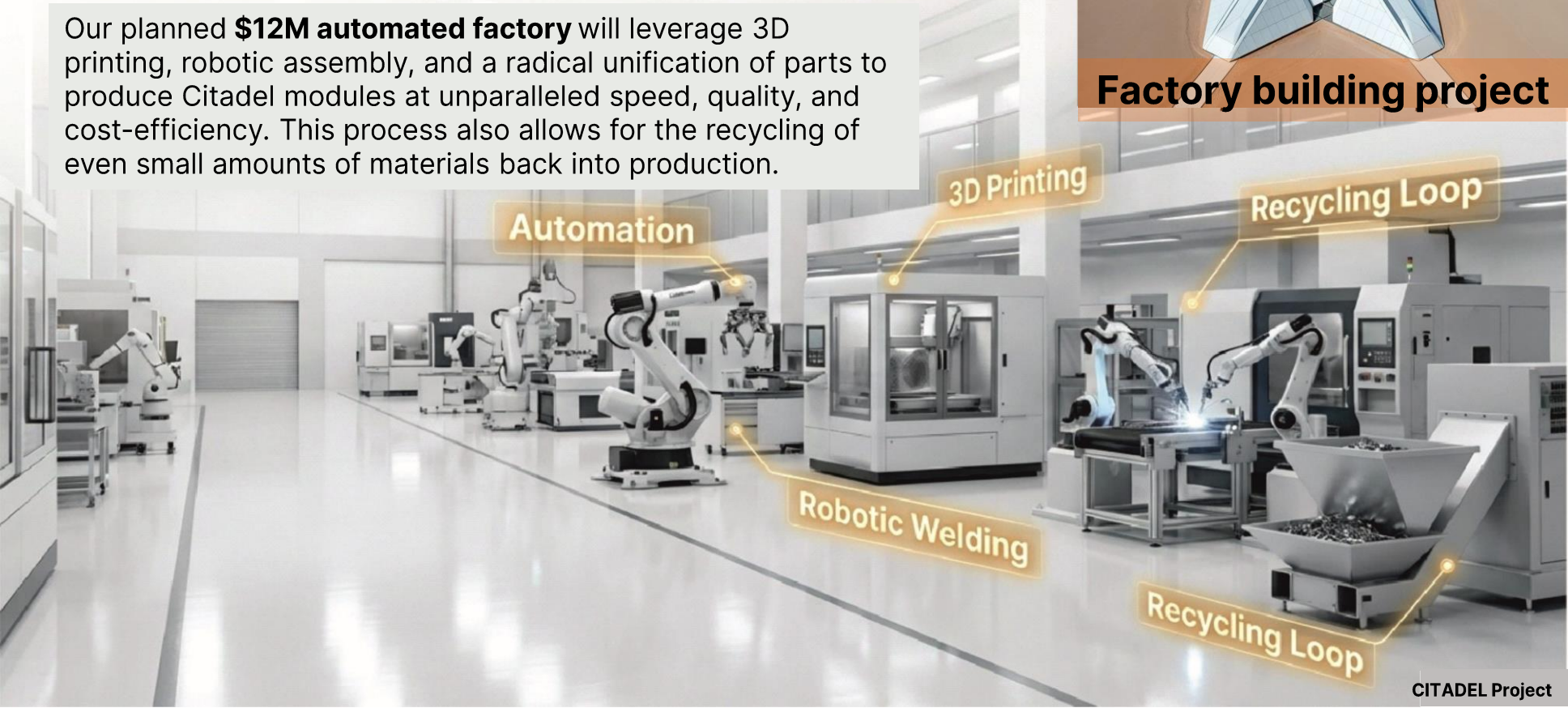
Hardened Command & Control Hub

The Engine of Scale: Manufacturing, Radically Simplified.

Our planned **\$12M automated factory** will leverage 3D printing, robotic assembly, and a radical unification of parts to produce Citadel modules at unparalleled speed, quality, and cost-efficiency. This process also allows for the recycling of even small amounts of materials back into production.



Factory building project



Automation

3D Printing

Recycling Loop

Robotic Welding

Recycling Loop

The Experience to Execute.

We are the engineering company with a foundation of 21 years of practical experience in producing building materials and construction. Our team specializes in creating buildings for extreme conditions, from -76°F to $+122^{\circ}\text{F}$ (-60°C to $+50^{\circ}\text{C}$) in areas with unstable soils, floods, hurricane winds. Our work is backed by international patents and award-winning designs.

21 Years

of construction & R&D experience.

Proven

in the harshest environments.



International Patents

Ready-to-go

Proven technical solutions, production maps, and drawings are complete.

Invest in a Future of Shelter.

This is a global-scale social project.

By providing highly energy-efficient, resilient, and truly affordable housing, we empower people to be save, invest in their education, and grow their families with financial security.

The first to embrace this technology will not only capture a global market but will fundamentally change how humanity lives on this planet.

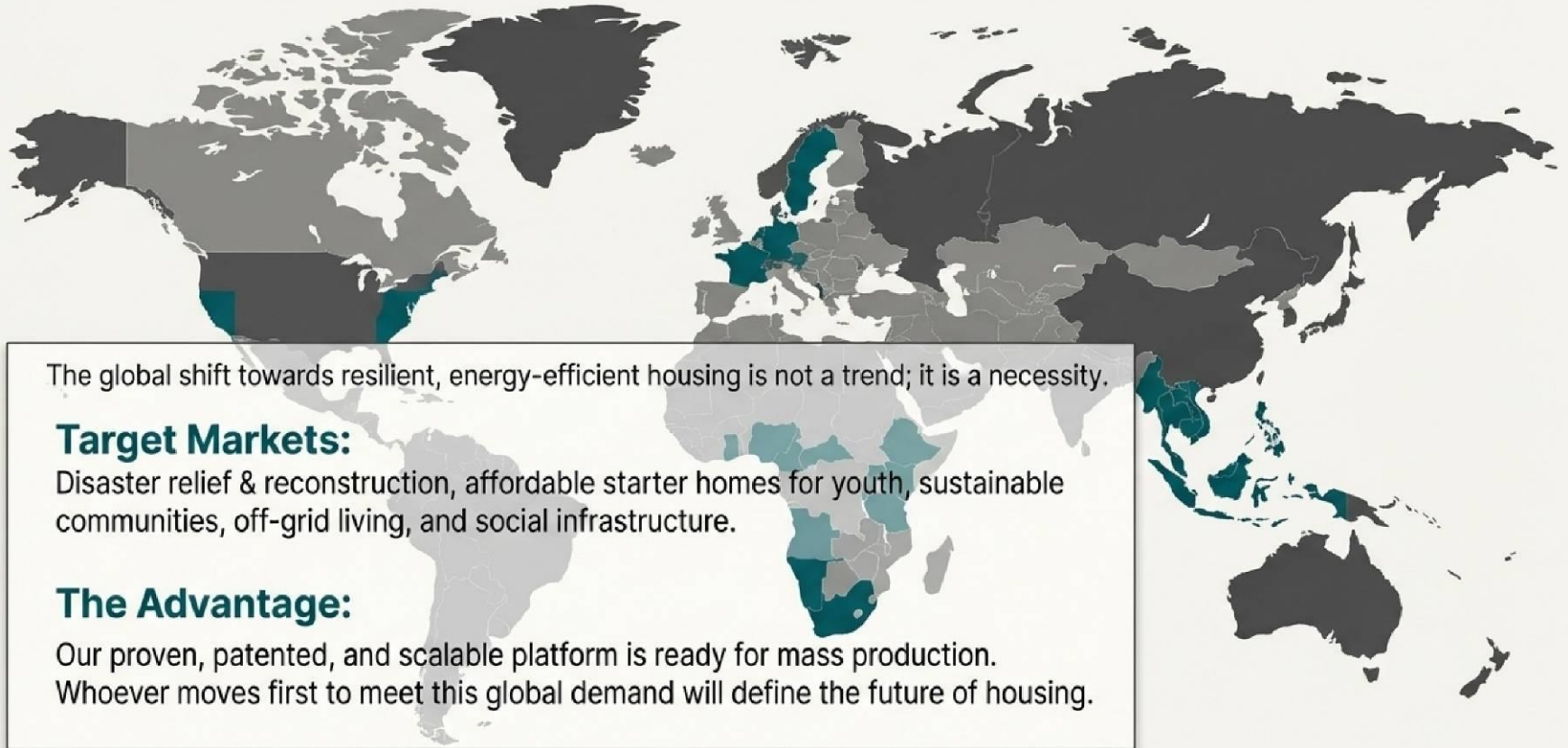


A Canvas for Your Brand.

The Citadel's iconic form and customizable exterior can be adapted for a wide range of applications. From a ski patrol station or emergency shelter to a branded visitor center or a remote research outpost, the possibilities are as vast as the landscapes it inhabits.



The First Mover in a New Global Market



The global shift towards resilient, energy-efficient housing is not a trend; it is a necessity.

Target Markets:

Disaster relief & reconstruction, affordable starter homes for youth, sustainable communities, off-grid living, and social infrastructure.

The Advantage:

Our proven, patented, and scalable platform is ready for mass production. Whoever moves first to meet this global demand will define the future of housing.



More Than a Home. It's a Foundation for Life.

Affordable, secure housing empowers people. By removing the burdens of mortgage debt and high energy costs, we free up household resources for families to invest in what truly matters: education, health, and building a better future for their children.



The Future of Housing Is Here. Join Us.



We Urge You to Support This Socially Significant Project.

Help us create safe buildings for our children and families.

How You Can Help



Invest & Donate: Help us scale production to meet global needs.



Collaborate: We seek partners for construction and rental businesses.



Localize Production: Our mobile, quick-assembly factory design makes it feasible to produce our products locally in your country.



Build a Safer World With Us.

Become a Founding Partner.



**For Investors & Strategic
Partners**

citadelbahrain@gmail.com

www.citadelbh.com